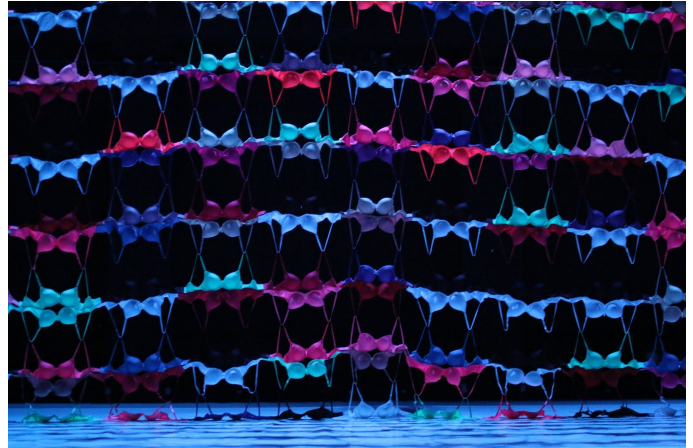


DO YOU WANT TO GET PAID TO WRANGLE A BRASCAPE?

The Wisconsin Union Theater is looking for 14 strong individuals to maneuver a large set piece around the stage for the performances of The Seldoms' *RockCitizen* - you could be one of them! What is this set piece, you ask? Why, it's 216 bras sewn together - see image at right!



This **brascape** was created by The Seldoms, a critically acclaimed professional dance company based in Chicago, and it features prominently in their piece *RockCitizen*, which examines counterculture movements of the 1960s and 1970s (hence, the bra-scape!).

You need not have any performance experience, and you need not know anything about the 1960s or 1970s or counterculture - you need only be strong, kinda tall, and willing to hold, stretch, lift and toss a net made of bras.

This is a great opportunity to do something that will give your resume pizzazz, while working with professional artists and performers, in a fun environment, with people like you who are undaunted by the work of maneuvering a large wad of bras over the heads of audience members.

Time commitment:

- **Workshop** from 1-4 pm on Saturday, September 22 (learning how to manipulate the bra-scape)
- **Rehearsals** Monday-Wednesday (September 24-26) from 6-10 pm
- **Performances** Thursday-Saturday (September 27-29) from 6-10 pm (shows start at 8 pm)

Location: All workshops, rehearsals & performances will take place in the Play Circle at Memorial Union (800 Langdon St, UW-Madison campus).

Compensation:

- \$200
- Meal before each performance
- Two comp tickets to one performance
- T-shirt (worn as a costume & yours to keep after the show)

If you are interested in participating, please **sign up [HERE](#)** by September 10th to attend a brief, collaborative “audition” on **September 11th at 6 pm in the Play Circle** (in Memorial Union) to ascertain your bra-scape wrangling skills (no pressure here - we simply need to make sure the cast of 14 are strong/tall enough and can work together). If you can't attend on September 11 but would still like to be considered, email Steffen Silvis at ssilvis@wisc.edu.

QUESTIONS? Contact Steffen Silvis at ssilvis@wisc.edu.